



WEBDEFEND GLOBAL EVENT MANAGER

The WebDefend Global Event Manager, developed in collaboration with Akamai Technologies, Inc., is the first web application security management solution that defends against global application security threats by enabling customers to make distributed cloud and data center defense-in-depth architectures operational.

The WebDefend Global Event Manager enables Breach and Akamai to work in concert across customers' web environments in real-time to accurately detect and block attacks, prevent unauthorized data leakage, improve performance and identify and remediate web application coding errors.

The WebDefend Global Event Manager also enables users of open source ModSecurity and Breach's ModSecurity appliances to consolidate monitoring, analysis and reporting on ModSecurity events in WebDefend's unique graphical user interface.

KEY FEATURES

The WebDefend Global Event Manager solution provides enterprises and leading web properties with the following breakthrough capabilities:

Defense-in-Depth

Visualize and monitor the security, compliance, and health of their entire web application environment, from the Akamai Edge in the cloud to the customer data center at the origin.

Optimize Application Performance

Continuously optimize the balance between web application performance and security by implementing distributed detection and blocking of malicious traffic with maximum efficacy, minimizing attack-related consumption of communication and processing resources across the entire web application environment.

Automation

Automatically generate combined cloud and data center web application reporting for trending, audit and compliance purposes.

Detailed Event Reporting

Integrated web application security events enable security operations centers, security, and event and incident management governance, risk and compliance programs.

The solution is designed to maximize the value of your Akamai Web Application Firewall service and your origin-based WAF solutions, including WebDefend and Mod Security, and help your organization make defense-in-depth protection for web applications operational by:

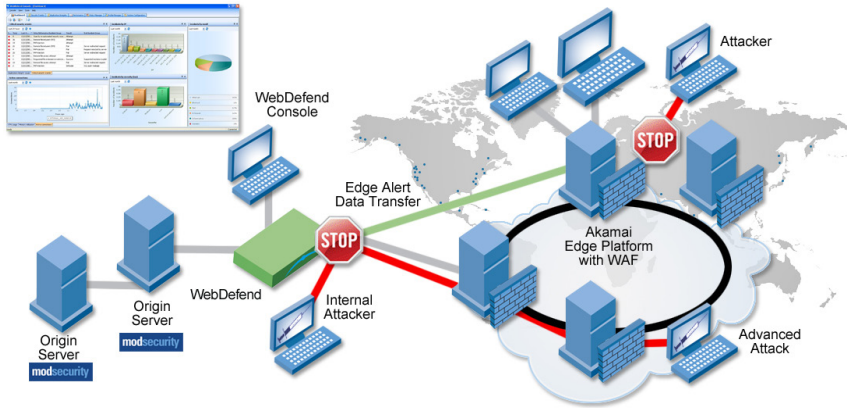
1. Facilitating test and evaluation of Akamai Web Application Firewall service rules configurations – if your organization deploys Mod Security or WebDefend sensors to analyze the same traffic as the Akamai Web Application Firewall service when it is in alert only mode (not configured for blocking), you will be able to conduct consolidated monitoring in the WebDefend Global Event Manager to validate your Akamai rules configurations by comparing the cloud events with the information-rich events produced by WebDefend or ModSecurity sensors at the origin in a single console in near real time.
2. Providing continued near real-time visibility into Akamai Web Application Firewall service activity once the Akamai Web Application Firewall service is configured to take blocking actions in the cloud. The WebDefend Global Event Manager will alert according to your policy on Akamai Web Application Firewall service events gathered from Akamai's near real-time event feed. Thus, customers can obtain near real time visibility on blocking activity in the cloud to supplement te riosic reporting provided by the Akamai customer portal.
3. Providing holistic web application security and integrity monitoring and event management across cloud-based and origin-based controls using WebDefend's best-of-breed management console.

"When customers use Breach's WebDefend and Akamai solutions together they not only make defense-in-depth a reality at the application layer, they also gain the performance benefits of the Akamai Platform and the operational visibility that helps WebDefend stand apart in the Web application firewall market today."

John Summers
Product Line Director,
Akamai Technologies

"Akamai, a true technology pioneer with a uniquely capable service delivery platform, understands the urgent need for all organizations to protect their web applications."

Sanjay Mehta
Senior Vice President,
Breach Security



- Organizing and presenting the information necessary to make defense-in-depth security tactics operational at the application layer - the WebDefend Global Event Manager helps your organization decide what activity should be analyzed or blocked in the cloud versus at the origin on a rule-by-rule and/or IP-by-IP basis.

The WebDefend Global Event Manager allows customers to compare these basic cloud events with detailed events - including full request and response bodies and detailed analysis - generated by WebDefend and ModSecurity sensors deployed in the data center at the origin. With this enhanced real-time visibility, organizations can make rapid decisions about what traffic to block and where across their cloud and origin based infrastructures.

BACKGROUND

Breach has partnered with Akamai to support development and sale of the Akamai Web Application Firewall service. Breach is the developer of both the open source Mod Security WAF, the world's most widely deployed WAF, and WebDefend, a commercially licensed third generation web application security solution that is widely considered best-of-breed in the industry.

Akamai makes near real-time security event information available to customers of the Akamai Web Application Firewall service. This event information (known as the "W-line") is produced by the individual systems that compose the Akamai Edge Platform. It provides basic security event information related to the Akamai Web Application Firewall service including:

- Time / Date
- Edge Platform
- WAF rules fired
- IP address of client system

The W-line can be consumed by remote or origin-based systems to monitor and manage the Akamai Web Application Firewall service security events in a near real-time manner.

ABOUT BREACH SECURITY™

Breach Security, Inc. is the leading provider of real-time, continuous web application security that protects sensitive web-based information. Breach Security's products protect web applications from hacking attacks and data leakage and ensure applications operate as intended. The company's products are trusted by thousands of organizations around the world, including leaders in finance, healthcare, ecommerce, travel and government.

For more information, contact your authorized Breach Security representative or visit www.breach.com.



Breach Security, Inc.
Corporate Headquarters

2141 Palomar Airport Road, #200 | Carlsbad, CA 92011 | USA
tel: (760) 268-1924 | toll-free: (866) 205-7032
fax: (760) 454-1746 | www.breach.com